



cve@caneyvalley.com
www.caneyvalley.com
For emergency outages please call 800-310-8911

THE CANEY VALLEY ELECTRIC
COOPERATIVE ASSOCIATION, INC.

TheVoice

Caney Valley Electric Co-op, Inc.

Board of Trustees

Kenneth Bates
President

Steve Clark
Vice President

Chris Kelly
Secretary/Treasurer

Alex Fulsom
Trustee

Dan Hubert
Trustee

Don Land
Trustee

Charles McMillan
Trustee

Stephanie Ollenborger
Trustee

Dale Steward
Trustee

Contact Us

401 Lawrence, P.O. Box 308
Cedar Vale, KS 67024
620-758-2262, Fax: 620-758-2926
cve@caneyvalley.com

Office Hours

Monday - Friday, 8 a.m. to 4:30 p.m.

Power Cost Adjustment

The Power Cost Adjustment (PCA) for May is a credit of \$0.0028/kilowatt-hour. This amounts to a credit of \$2.81 per 1,000 kilowatt-hours. The PCA was implemented in 2002 to cover only the increase (or decrease) in power costs (over and above 7¢/kWh) charged to us by our wholesale power supplier, Kansas Electric Power Cooperative (KEPCo) in Topeka. The PCA varies each month depending on the wholesale charges from KEPCo, and is a flow-through on your electric bill.

FROM THE GENERAL MANAGER

February Weather Event Update

After having time to review and analyze the many excessive costs resulting from the February extreme cold weather event, the cooperative's wholesale power supplier, Kansas Electric Power Cooperative (KEPCo), has taken significant measures to minimize the costs passed on to its member cooperatives and their consumer-members. At KEPCo's March meeting, the board approved a 24-month amortization period for the energy-related costs attributable to the February event. This action helps mitigate the cost impacts to the nearly 300,000 rural Kansans that KEPCo's member cooperatives serve. KEPCo is committed to its member cooperatives' best interest in its operations.

Caney Valley's members' initial benefits from KEPCo's efforts will be experienced on the May electric bill with a negative Power Cost Adjustment (PCA) of \$0.00281 per kWh.

Please contact me with any questions or concerns you may have.

ALLEN A. ZADOROZNY, GENERAL MANAGER



ENERGY EFFICIENCY Tip of the Month

Avoid placing items like lamps and televisions near your thermostat. The thermostat senses heat from these appliances, which can cause your air conditioner to run longer than necessary.

SOURCE: ENERGY.GOV



Help us keep our linemen safe.

Utility poles are not bulletin boards. Foreign objects can tear utility workers' protective clothing leaving them vulnerable to electrocution.

Anyone posting items on utility poles is also at risk of exposure to electricity pulsing overhead. Always stay at least 10 feet away from utility lines.

Think before you post!



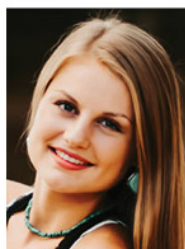
Winners of Leadership Conference and Scholarships Announced

Normally we would announce the students selected to participate in the Kansas Youth Leadership Conference and those selected as scholarship recipients at our annual meeting, which is usually held in March. However, due to COVID-19 concerns, our annual meeting has been delayed until August. We would like to take this opportunity to announce the following winners.

Three high school juniors will participate in the Kansas Electric Youth (KEY) Leadership Conference sponsored by Kansas Electric Cooperatives and local cooperatives across Kansas and Oklahoma. The conference will be held virtually June 21-25, and is designed to unlock and develop leadership potential. Congratulations to **ALANNA WALKER**, **HANNAH WHETSTONE** and **LYDIA WOODS** who all attend West Elk High School.

Caney Valley has offered seven scholarships each year to students in our service area since 1997. But, due to a generous anonymous donor, we were able to select two additional students to receive \$1,000 scholarships for their first year of college or vocational-technical school: **BROOKE THOMPSON**, Caney Valley High School; **HARLEY BRANSCUM**, Central of Burden; **MANDI FORD** and **GEORGIA KELLEY** Cedar Vale High School; **JOSIE GAGE**, Dexter High School; **DESTINY LANE** and **CAITLIN WILLIAMS**, Sedan High School; **DAKOTA WISEMAN**, West Elk High School; and **CRAIG LABRUE**, Winfield High School. Congratulations to all student winners!

SCHOLARSHIP WINNERS



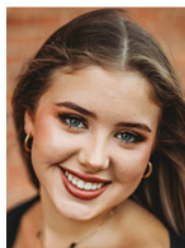
Harley Branscum



Mandi Ford



Josie Gage



Georgia Kelley



Craig LaBrue



Destiny Lane



Brooke Thompson



Caitlin Williams



Dakota Wiseman



Alanna Walker



Hannah Whetstone



Lydia Woods

KANSAS ELECTRIC YOUTH LEADERSHIP CONFERENCE WINNERS

Tree Trimming Improves Service for All

One of the things we love best about our community is the natural beauty that surrounds us. We are fortunate to have so many trees that offer beauty, shade and a habitat for all sorts of birds and other wildlife. We know that you appreciate our community for many of the same reasons.

At Caney Valley Electric, we strive to balance maintaining beautiful surroundings and ensuring a reliable power supply by keeping power lines clear in rights of way (ROW).

While we recognize and appreciate the beauty of trees, there are three main benefits to tree trimming in ROW areas. However, before touching on the main reasons, let us explain what a "right of way" is and how it may impact you. A right of way is the land we use to construct, maintain, replace or repair underground and overhead power lines. Rights of way enable the co-op to provide clearance from trees and other obstructions that could hinder the power line installation, maintenance or operation. ROW areas are typically on public lands or located near a business or home. Regardless, Caney Valley Electric must be able to maintain the power lines above and below the ROW. The overall goal of our vegetation man-

agement program is to provide reliable power to our members while maintaining the beauty of our community. Proactive vegetation management benefits co-op members in three tangible ways.

Safety

First and foremost, we care about our members and put their safety and that of our lineworkers above all else. Overgrown vegetation and trees pose a risk to power lines. For example, if trees are touching power lines in our members' yards, they can pose grave danger to families. If children can access those trees, they can potentially climb into a danger zone. Electricity can arc, or jump, from a power line to a nearby conductor like a tree. A proactive approach also diminishes the chances of fallen branches or trees during severe weather events that make it more complicated and dangerous for lineworkers to restore power.

We also want to ensure member safety by completing the tree trimming near power lines by using OSHA-certified tree trimmers. Trimming tree limbs near power lines is a dangerous job and has many hazards. We do not want our members attempting to trim any limbs near power lines.

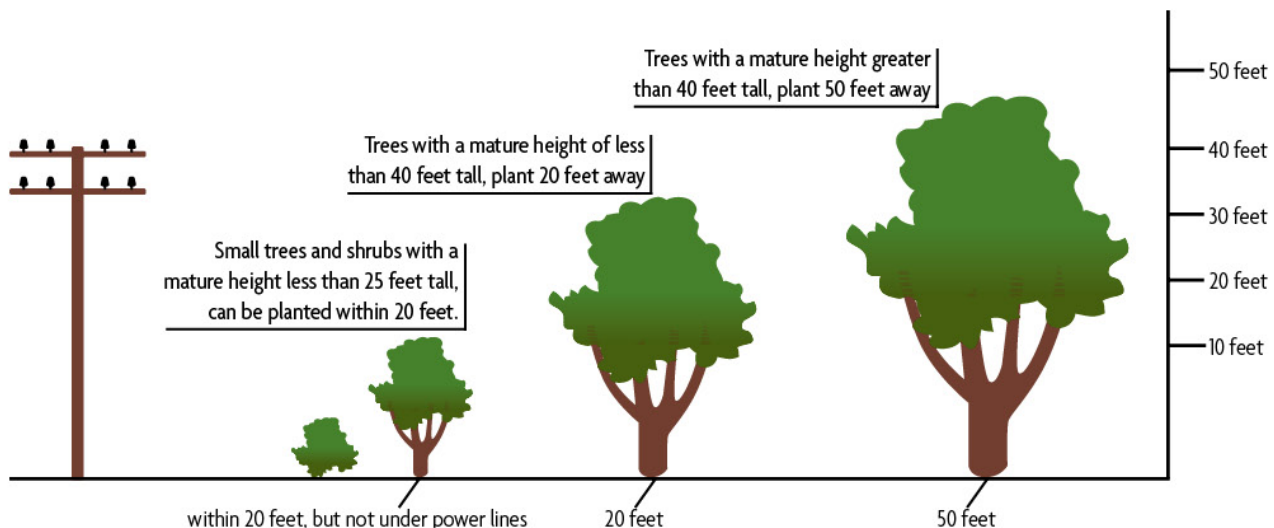
Reliability

Of course, one of the biggest benefits of a smart vegetation management program is reliability. Strategic tree trimming reduces the frequency of downed lines causing power outages. Generally speaking, healthy trees don't fall on power lines, and clear lines don't cause problems. Proactive trimming and pruning keeps lines clear to promote reliability.

Affordability

As you know, Caney Valley Electric is a not-for-profit cooperative, and that means we strive to keep our costs in check to keep our rates affordable. This extends to our approach to vegetation management. If trees grow too close to power lines, the potential for expensive repairs also increases. Effective tree trimming and other vegetation management efforts keep costs down for everyone.

Our community is a special place. We appreciate the beauty trees afford, but we also know our community depends on us to provide reliable energy. Through vegetation management, we are better able to keep the power lines clear, prepare for future weather events and secure the reliability of the grid.



Right-of-Way Clearing



Craig Lampson

As part of the cooperative's ongoing program to control harmful vegetation near our power lines, we have contracted with Poor Boy Tree Service Inc. of

Fairplay, Missouri, to apply herbicide along our rights-of-way in 2021. The lines in our Longton substation in **ELK COUNTY (AREAS EAST OF HOWARD AND AROUND ELK FALLS, LONGTON AND OAK VALLEY)** are scheduled to be covered over the next few months.

Poor Boy's two-man crew will be applying high-volume foliar spray herbicide directly to small trees, saplings, and harmful re-growth that has occurred since the lines were cleared by tree cutting. They will be using the minimum

amount of herbicide judged to be effective and will be targeting specific plants that pose a hazard to the electric system. You should expect to see their pickup and/or ATV with spray equipment working along the rights-of-way under Caney Valley's electric lines.

Trees continue to pose the greatest physical obstacle to providing economical and reliable electric power to the consumers on Caney Valley's system. The problems caused by trees and the costs of controlling them are born by all of our members collectively. We appreciate your support of the cooperative's efforts to reduce tree-related problems in a fair and cost-effective manner. If you have any questions about our spraying or line clearing activities, please call us at 1-800-310-8911 or 1-620-758-2262.

CRAIG LAMPSON
LINE SUPERINTENDENT

Caney Valley's Operating Statistics

For Month Ending	Feb. 2021	Feb. 2020
Meters Billed	5,262	5,280
kWh Purchased	5,926,346	5,371,280
Cost Per kWh	0.08725	0.06709
kWh Sold	5,279,913	5,256,008
Total Revenue	\$ 828,673	\$ 693,573
Purchased Power	\$ 517,732	\$ 360,871
Operating Expenses	\$ 240,138	\$ 234,375
Depreciation Expenses	\$ 69,875	\$ 68,389
Interest Expenses	\$ 38,593	\$ 45,079
Other Expenses	\$ 163	\$ 163
Operating Margins	\$ (37,828)	\$ (15,304)
Non-operating Margins	\$ 4,994	\$ 4,395
Total Working Margins	\$ (32,834)	\$ (10,909)
Margins Year-to-Date	\$ 51,468	\$ 6,853

UNDERSTAND BASIC ESSENTIALS OF ELECTRICAL SAFETY



One of the most important things you can do in your home is to make sure the electrical system meets basic safety requirements.

By doing so, not only are you checking the condition of your home's electrical system, but you're also ensuring the safety of your loved ones.

Basic Home Electrical Safety Essentials

- ▶ Check for loose-fitting plugs, which can be a shock or fire hazard.
- ▶ Ensure ground fault circuit interrupters are installed near water supplies and outdoors.
- ▶ Use extension cords **ONLY** on a temporary basis.
- ▶ Match lightbulb wattage to fixture requirements.
- ▶ Do not overload your home's service capacity. A qualified electrician can determine the appropriate service requirements for your home.

Signs of Electrical Wiring Problems

- ▶ Dim or flickering lights
- ▶ Burning smell, smoke, shocks or discoloration when using an electrical outlet or switch
- ▶ Frayed wires
- ▶ Breakers that trip
- ▶ Rodent damage

When Do I Get an Electrical Home Inspection? If Your Last Inspection Was:

- ▶ **More than 40 years ago** — an inspection is overdue.
- ▶ **10-40 years ago** — an inspection is recommended, especially if your electrical demands have increased or you've noticed warning signs of an electrical problem.
- ▶ **Less than 10 years ago** — an inspection isn't essential unless you've noticed warning signs of an electrical problem.