



cve@caneyvalley.com

www.caneyvalley.com

For emergency outages please call 800-310-8911

THE CANEY VALLEY ELECTRIC
COOPERATIVE ASSOCIATION, INC.

TheVoice

Caney Valley Electric Co-op, Inc.

Board of Trustees

Chris Kelly
President

Steve Clark
Vice President

Don Land
Secretary/Treasurer

Kenneth Bates
Trustee

Alex Fulsom
Trustee

Dan Hubert
Trustee

Charles McMillan
Trustee

Stephanie Ollenborger
Trustee

Steve Warburton
Trustee

Contact Us

401 Lawrence, P.O. Box 308
Cedar Vale, KS 67024
620-758-2262, Fax: 620-758-2926
cve@caneyvalley.com

Office Hours

Monday - Friday, 8 a.m. to 4:30 p.m.

Power Cost Adjustment

The Power Cost Adjustment (PCA) for April is \$.01241 / kilowatt hour. This amounts to \$12.41 per 1,000 kilowatt hours. The PCA was implemented in 2002 to cover only the increase (or decrease) in power costs (over and above 7¢/kwh) charged to us by our wholesale power supplier, Kansas Electric Power Cooperative (KEPCo) in Topeka. The PCA varies each month depending on the wholesale charges from KEPCo, and is a flow-through on your electric bill.

FROM THE GENERAL MANAGER

The Power Behind Your Power

Lineworker Appreciation Day is April 11.

You've likely noticed Caney Valley Electric's crews out and about, working on power lines and other electrical equipment in our community. It's no secret that a lineworker's job is tough — but it's a job that's essential and must be done, often in challenging conditions. This month, as we celebrate Lineworker Appreciation Day on April 11, I thought I'd share some interesting facts about electric lineworkers with you.

The work can be heavy, in more ways than one. Did you know the equipment and tools that a lineworker carries while climbing a utility pole can weigh up to 50 pounds? That's the same as carrying 6 gallons of water. Speaking of utility poles, lineworkers are required to climb poles ranging anywhere from 30 to 120 feet tall. Needless to say, if you have a fear of heights, this likely isn't the career path for you.

Lineworkers must be committed to their career — because it's not just a job, it's a lifestyle. The long hours and ever-present danger can truly take a toll. In fact, being a lineworker is listed in the top 10 most dangerous jobs in the U.S.

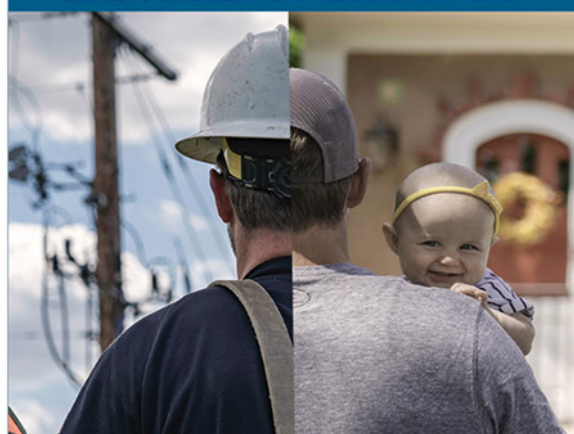
Lineworkers often work non-traditional hours, outdoors in difficult conditions. While the job does not require a college degree, it does require technical skills, years of training and hands-on

learning. Did you know that to become a journeyman lineworker can take more than 7,000 hours of training (or about four years)? That's because working with high-voltage equipment requires specialized skills, experience and an ongoing mental toughness. Shortcuts are not an option, and there is no room for error in this line of work.

Despite the many challenges, Caney Valley Electric's lineworkers are committed to powering our local community. During severe weather events that bring major power outages, lineworkers are

Continued on page 128 ►

LINEWORKER APPRECIATION DAY



APRIL 11, 2022

We thank lineworkers for their courage and commitment to powering our community.

The Power Behind Your Power

Continued from page 12A ►

among the first ones called. They must be ready to leave the comfort of their home and families unexpectedly, and they don't return until the job is done, often days later. That's why the lineworker's family is also dedicated to service. They understand the importance of the job to the community.

Nationwide, there are approximately 120,000 electric lineworkers. Here at Caney Valley Electric there are 13 lineworkers that are responsible for keeping power flowing 24/7, 365 days a year. To do this, they maintain 1,731 miles of power lines across all, or portions of, 5 counties. In addition to the highly visible tasks lineworkers perform, their job today goes far beyond climbing utility poles to repair a wire. Today's lineworkers are information experts who can pinpoint power outages from miles away. Line crews now use laptops, tablets, drones and other technologies to map outages, survey damage and troubleshoot problems.

Being a lineworker may not seem like a glamorous job, but it is absolutely essential to the life of our community. Without the exceptional dedication and commitment of these hardworking men, we simply would not have the reliable electricity we need for everyday life.

So, the next time you see a lineworker, please thank them for the work they do to keep power flowing, regardless of the time of day or weather conditions. After all, lineworkers are the power behind your power. Please join us as we recognize them on Monday, April 11, and follow "#ThankALineworker" on social media to see how others are recognizing lineworkers.

**ALLEN A. ZADOROZNY,
GENERAL MANAGER**

Remember to Use Caution When Burning

Each spring, all across Caney Valley Electric's service territory, members prepare to burn pasture for the upcoming spring grass season.

Every year, Caney Valley Electric's employees witness damage being done to Caney Valley's poles and equipment by "controlled" burns. Please be aware that burning or even scorching a pole will compromise the integrity of the structure.

Power poles are treated with a protective coating that prevents moisture from entering the core of the pole and causing deterioration. If a pole is scorched or blackened, the protective coating is damaged. Though it may appear as just a discoloration or slight burn, this is, in fact, damage to the pole. This will significantly shorten the life of a power pole. This pole may then become a hazard and could cause an outage.

Caney Valley once again reminds members to plan your burning before you begin. It is much cheaper to prevent a pole from catching fire than to pay for a new pole. Members will be held liable for the replacement cost of pole(s) and/or equipment due to fire damage. This cost may vary from \$1,000 to more than \$2,000 depending on the structure of the pole and equipment. It only takes a little extra effort to prevent pole damage and help control costs for you and your cooperative.

Burning of pastures and ditches does not have to result in the burning/scorching of power poles. If there are power poles in the area to be burned, clear the vegetation/weeds at least 4 feet around the base of the pole and



Before burning, check the property for electrical equipment and power poles to avoid damage and potential outages.

wet the base of the pole with water before beginning to burn.

If the fire does get away from you and a pole becomes engulfed in flames, immediately call the fire department and Caney Valley Electric. Do not spray water close to the conductors! Water and electricity do not mix! This may cause a short circuit. You and/or the firefighters could be in the path of that current and serious injury or death may result.

Report any fire-damaged pole to Caney Valley Electric immediately. Not reporting the damage may cause a serious accident to happen later.

A pole that has been burned through is likely to fall over. This can leave the energized lines about a foot off the ground. If a person comes into contact with the line, they most likely will be seriously burned, or even killed. This carelessness could cost a life.



Students Selected for Leadership Camp

Congratulations to the following students, who were selected to attend the leadership camp at Steamboat Springs, Colorado, in July: **JACEY MCINTIRE**, Dexter High School, and **MACY HAAG** and **KARLY KILL**, West Elk High School.

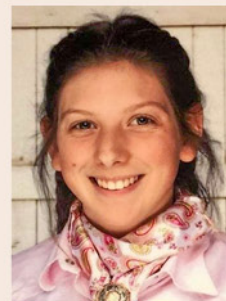
They will join other high school students from Kansas, Colorado, Wyoming and Oklahoma for a weeklong opportunity to improve leadership skills, learn about electrification, cooperatives, energy problems, safety and interpersonal communications.



Macy Haag



Karly Kill



Jacey McIntire

Right-of-Way Clearing



Craig Lampson
Line Superintendent

As part of the cooperative's ongoing program to control harmful vegetation near our power lines, we have contracted with Poor Boy Tree Service Inc. of Fairplay, Missouri, to apply

herbicide along our rights-of-way in 2022. The lines off our Caney substation in Montgomery and Chautauqua counties are scheduled to be covered over the next few months. **THIS INCLUDES AREAS FROM CANEY TO ELK CITY, WAY-SIDE TO NIOTAZE and SOUTH TO THE STATE LINE.**

Poor Boy's two-man crew will be applying high-volume foliar spray herbicide directly to small trees, saplings and harmful re-growth that has occurred

since the lines were cleared by tree cutting. They will be using the minimum amount of herbicide judged to be effective and will be targeting specific plants that pose a hazard to the electric system. You should expect to see their pickup and/or ATV with spray equipment working along the rights-of-way under Caney Valley's electric lines.

Trees continue to pose the greatest physical obstacle to providing economical and reliable electric power to the consumers on Caney Valley's system. The problems caused by trees and the costs of controlling them are born by all of our members collectively. We appreciate your support of the cooperative's efforts to reduce tree-related problems in a fair and cost-effective manner. If you have any questions about our spraying or line clearing activities, please call us at 800-310-8911 or 620-758-2262.

Operating Statistics

For Month Ending	Jan 2022	Jan 2021
Meters Billed	5,263	5,253
kWh Purchased	6,220,726	5,824,853
Cost Per kWh	0.07813	0.07005
kWh Sold	4,716,497	5,279,913
Total Revenue	\$ 754,882	\$ 827,748
Purchased Power	\$ 486,993	\$ 408,790
Operating Expenses	\$ 242,407	\$ 225,800
Depreciation Expenses	\$ 70,892	\$ 70,043
Interest Expenses	\$ 40,534	\$ 40,645
Other Expenses	\$ 638	\$ 288
Operating Margins	\$ (86,581)	\$ 82,181
Non-operating Margins	\$ 2,907	\$ 2,121
Total Working Margins	\$ (83,675)	\$ 84,302
Margins Year-to-Date	\$ (83,675)	\$ 84,302

ENERGY EFFICIENCY

Tip of the Month

When streaming content, use the smallest device that makes sense for the number of people watching. Avoid streaming on game consoles, which use 10 times more power than streaming through a tablet or laptop. Streaming content with electronic equipment that has earned the ENERGY STAR® rating will use 25%-30% less energy than standard equipment. **SOURCE: ENERGY.GOV**

Outages for February 2022

Occasionally, a part or parts of the delivery system fail and an outage occurs. Below are the larger outages that occurred in February 2022.

Date	Area	Members Affected	Duration	Cause
2/16	NW of Sedan	45	3 hrs	Lightning
2/17	Silverdale meter point B-phase	62	2 hrs	Broken jumper

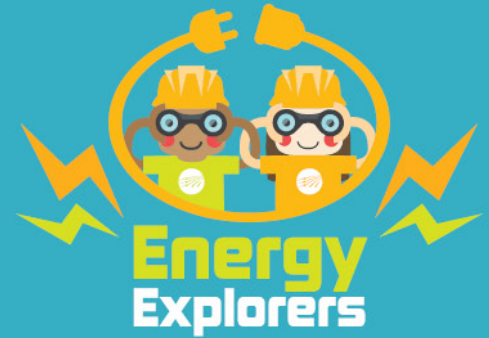
DO YOU KNOW ABOUT LINEWORKERS?

Every April, we celebrate lineworkers and the hard work they do to make sure we have electricity to power our lives.

How much do you know about lineworkers?

Take the quiz below to find out!

(Use the answer key to check your work.)



a. Lineworkers have to wear a lot of gear to do their jobs. A lineworker's gear can weigh up to ____.

- a. 15 pounds b. 50 pounds c. 80 pounds

b. Lineworkers maintain and repair electrical lines, but they do not install them.

- a. True (no installation) b. False (They maintain, repair and install lines)

c. There are approximately _____ lineworkers in the United States.

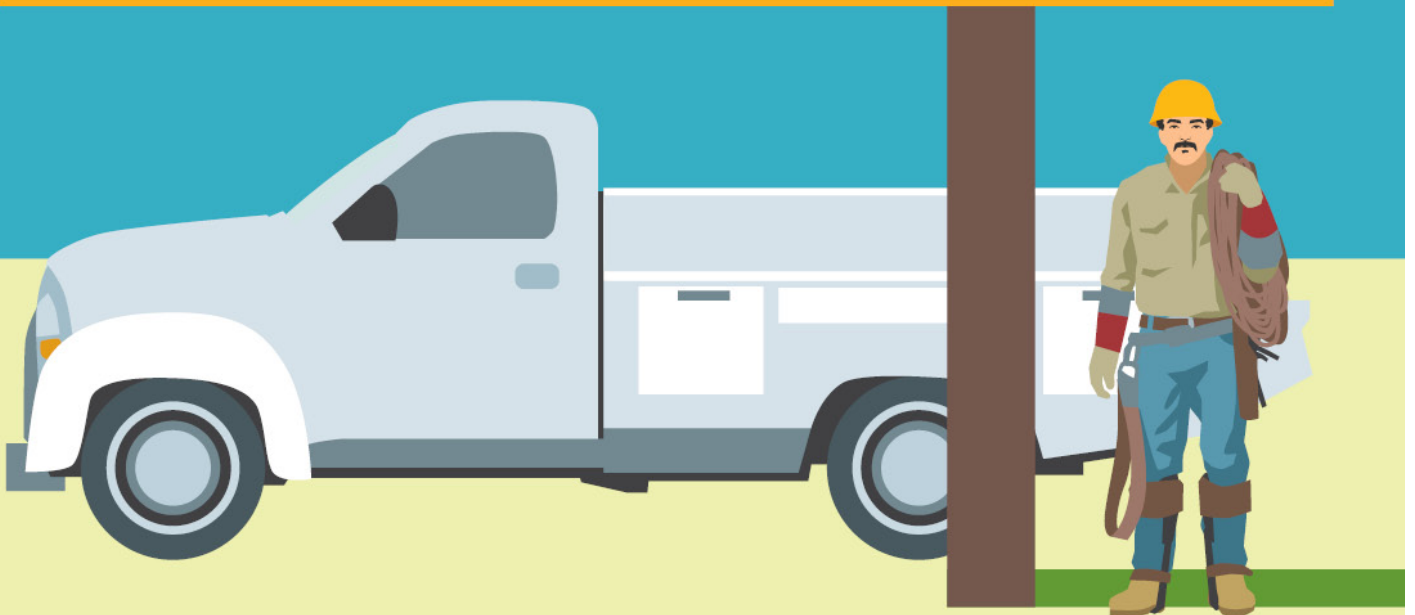
- a. 50,000 b. 90,000 c. 120,000

d. Lineworkers must wear _____ clothing to protect them from a possible electric arc while working.

- a. fire resistant b. extra thick c. leather or rubber

e. Lineworkers must wear special conductive boots when climbing a steel structure.

- a. True b. False



Answer Key: 1) b. 50 pounds 2) b. False 3) c. 120,000 4) a. fire resistant 5) a. True