

THE CANEY VALLEY ELECTRIC
COOPERATIVE ASSOCIATION, INC.

The Voice

Caney Valley Electric Cooperative Assn., Inc.

Allen Zadorozny—General Manager

Board of Trustees

Kenneth Bates
President

Jim Clark
Vice President

Coral Ann Magnus
Secretary/Treasurer

David Evans
Trustee

Dan Hubert
Trustee

Carl Johnson, Jr
Trustee

Dwane Kessinger
Trustee

Jack Newcomb
Trustee

Dale Steward
Trustee

Contact Us

401 Lawrence, P.O. Box 308
Cedar Vale, KS 67024
620-758-2262, Fax: 620-758-2926
cve@caneyvalley.com.

Office Hours

Monday - Friday, 8 a.m. to 4:30 p.m.

Power Cost Adjustment

The Power Cost Adjustment (PCA) for July is \$.03797/kilowatt-hour. This calculates to an additional \$37.97 per 1,000 kWh used.

The PCA was implemented in 2002 to cover only the increase in power costs (over and above 5¢/kWh) charged to us by our wholesale power supplier, Kansas Electric Power Cooperative (KEPCo) in Topeka. The PCA varies each month depending on the wholesale charges from KEPCo, and is a flow-through on your electric bill.

FROM THE MANAGER

Hold Down Monthly Costs with Peak Control

This month, we are asking you to participate in the "Peak Control" program. This voluntary program can help hold down the wholesale power costs incurred by the cooperative.

The peak demand for electricity recorded in July and August drives a major part of the wholesale power billing process for the eight off-peak months that follow, October through May. The lower the peak demand reg-

istered, the lower demand charges will be.

Please take time to review the key parts of Peak Control below.

Contact me at 758-2261 or 800-310-8911 if you have any questions. Thank you for your participation in this program.



Allen Zadorozny

Allen Zadorozny, Manager

What is Peak Control & How Can You Help?

For the months of June, July, August, and September, the cooperative is asking you to participate in the "Peak Control" program. This voluntary program can help hold down the monthly wholesale power costs charged to the cooperative.

What is Peak Control?

Peak Control is a voluntary program in which the cooperative members can participate to hold down electricity costs.

What Can You do to Participate in Peak Control?

You can participate by voluntarily monitoring when you use electric appliances and equipment which require larger amounts of electricity.

When do You Need to Participate in Peak Control?

During the hours of 4 p.m. to 8 p.m. every weekday from June 1–September 30.

The actual peak demand for June, July, August, and September is the billing

demand for each respective month. **Special emphasis is placed during July and August, as the peak electricity demand registered by Caney Valley ECA during those two months drives the electricity billings for the following "off-peak" eight months, October through May.**

Be aware of days that have high temperatures forecasted above 90 degrees Fahrenheit. These are the type of days when peak demand can occur. Be especially careful when using large amounts of electricity on warm days.

What are the Benefits of Taking Part in Peak Control?

By helping hold the line for the kW demand charges on Caney Valley ECA's electric bill, you will also limit the amount of the resulting power cost adjustment (PCA) charges added to your electric bills.

Please contact our office for any questions you may have about the Peak Control program.

Two Bucket Trucks for Sale

Place Your Bid by August 1



Caney Valley is accepting bids on two used bucket trucks. The units can be seen at our office at 401 Lawrence, Cedar Vale.

Bids will be accepted until 4:30 p.m. August 1, 2012. Caney Valley has the right to refuse any and all bids.

► **UNIT 1** (top photo)—A 2003 Ford F-350, with 230,155 miles, four-wheel drive, and an ETI 331H bucket unit.

► **UNIT 2** (bottom photo)—A 2003 Ford F-550, with 159,190 miles, four-wheel drive, and a Telelect 37' bucket unit.

Know What's Below: Call before You Dig

If your planned projects include digging, like planting a tree, wait a few more days so the job can be done safely. Underground utilities, such as buried gas, water, and electric lines, can be a shovel thrust away from turning a summer project into a disaster.

To find out where utility lines run on

Youth Program Winners Announced



Luke Bellar
Scholarship Winner



Justin Bryant
Camp Winner



Brett Champlin
Scholarship Winner



Kayla Clapp
Scholarship Winner

Scholarship winners were announced at Caney Valley's Annual Meeting for the 2012-2013 school year. Each of these students will receive \$300

each semester of the first year of college (\$600 total). Students were selected based on ACT scores, GPA, leadership activities, and financial need.

- **LUKE BELLAR**, Howard, West Elk High School
- **BRETT CHAMPLIN**, Cedar Vale, Cedar Vale High School
- **KAYLA CLAPP**, Niotaze, Caney Valley High School
- **ALEXA DEFORE**, Dexter, Dexter High School
- **BRITTNEY HUNTINGTON**, Longton, West Elk High School
- **MELISSA MILLER**, Sedan, Sedan High School
- **MATTHEW WOMACKS**, Atlanta, Blue-stem High School

Womacks and Bellar will also receive an additional \$250 for their participation in the Cooperative Youth



Alexa Defore
Scholarship Winner



Brittney Huntington
Scholarship Winner



Kanyon Kelly
Camp Winner



Melissa Miller
Scholarship Winner



Matthew Womacks
Scholarship Winner

Leadership Camp at Steamboat Springs in July 2011.

This year's winners of the Cooperative Leadership Camp are **JUSTIN BRYANT**, Cedar Vale High School and **KANYON KELLY**, West Elk High School. Bellar was selected by the other campers last year to return this year as the Kansas male ambassador.

Congratulations to all the students above for participating in the cooperative's youth programs!

Some seemingly simple tasks like planting shrubs or installing a new mailbox post can damage utility lines. A severed line can disrupt service to an entire neighborhood, harm diggers and potentially result in fines.

Never assume the location or depth of underground utility lines. There's no need: the **811 service is free**, prevents the inconvenience of having utilities interrupted, and can help you avoid serious injury. For more information about local services, visit www.call811.com.

Vegetation Control Crews May Be in Your Area



Craig Lampson
Line Superintendent

As part of the cooperative's ongoing program to control harmful vegetation near our power lines, we have contracted with Northeast Rural Services (NRS) of

Vinita, OK, to apply chemicals along our rights-of-way in 2012. The lines serving members east, north and west of Sedan are scheduled to be covered over the next few months.

NRS's two-man crew will be applying high-volume foliar spray herbicide directly to small trees, saplings, and harmful re-growth that has occurred since the lines were cleared by tree cutting. They will be using the minimum amount of chemical judged to be effective and will be targeting specific plants that pose a hazard to the electric system.

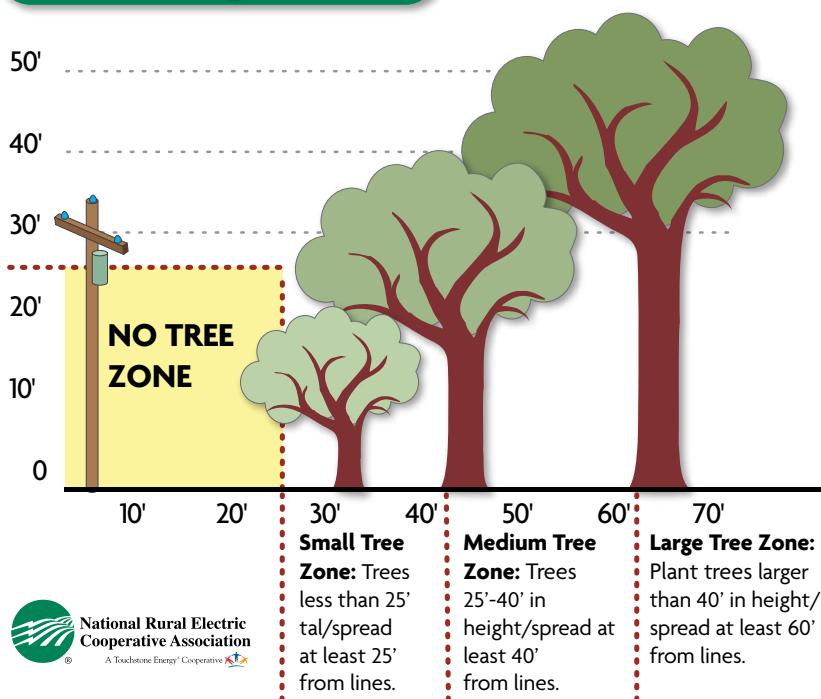
Trees continue to pose the greatest physical obstacle to providing economical and reliable electric power.

You should expect to see their pickup and/or ATV with spray equipment working along the rights-of-way under Caney Valley's electric lines.

Trees continue to pose the greatest physical obstacle to providing economical and reliable electric power to the members on Caney Valley's system. The problems caused by trees and the costs of controlling them are born by all of our members collectively.

We appreciate your support of the cooperative's efforts to reduce tree-related problems in a fair and cost-effective manner. If you have any questions about our spraying or line clearing activities, please call us at 800-310-8911 or 620-758-2262.

Tree Planting Guide



To protect your power supply, be sure to plant trees the appropriate distance away from power lines, as shows in this model.

In Memoriam

The Board of Trustees, management and staff would like to express our sympathies to the family of **NOLA STEWARD**, who passed away May 17, 2012.



COUNTRYSIDE FUNERAL HOME

She was the wife of Carl Steward, Caney Valley's first manager, who served in that position from 1946 to 1974.

Our condolences go out to her children and their families Byron and Joyce Steward and Beth and Don Land.

Please Notify Caney Valley if a Member Passes

From time-to-time the cooperative becomes aware that an electric account is still active in a deceased person's name, even several months or years after his/her death.

Please be aware that the cooperative's bylaws and policies state that *upon the death of a member, his/her membership in the cooperative shall also terminate, and no capital credits can be allocated to the deceased member after death.* Our bylaws also state that capital credits under the deceased person's name can be paid out if the proper forms are submitted to our office and all final electric bills are paid under that person's name.

We understand that it may take several weeks to make the proper arrangements following the death of a loved one. However, we urge you to have the electric billings changed over as soon as possible so that you and/or other heirs can receive the capital credit payments you may be due.

ENERGY EFFICIENCY TIPS

The Science of Radiation

BY DOUG RYE



Doug Rye

I am writing this column at 5:45 a.m. as I watch the beautiful sunrise. Yes, the amazing sun. As you may recall, we have discussed previously

how all energy comes from the sun and how heat travels by three methods. We have already discussed conduction and convection, and will now discuss what I consider to be the most interesting form of heat transfer of the three: radiation.

Webster's dictionary defines radiation as, "The process in which energy in the form of rays of light, heat, etc., is sent out from atoms and molecules as they undergo internal change."

Radiation is the only mechanism of heat transfer that can move energy across empty space. Radiation from the sun travels to earth by the visible spectrum, such as white light, which we can see, and by the invisible spectrum, which we can't see, as in the form of radio waves, microwaves, infrared waves, ultraviolet waves, X-rays, gamma rays and who knows what other waves or rays that might be discovered in the future. This form of heat transfer can actually affect our mood, attitude and happiness.

Suppose that it has been really cold and we haven't seen the sun in days. Suddenly, the sun comes out and we all, including our pets, hurry outside or to a window to absorb the sun's marvelous heat rays. If we live in a northern state, we may dream of heading to the Gulf Coast to bathe in the sun. Of course, those same marvelous rays can ruin that trip and be very painful if we absorb too many of them.

Do you sometimes dream, as I do, about being in a log cabin in the mountains on a snowy day with a big fire burning in a stone fireplace? Can anything be better than backing up to that fire and feeling that heat on your backside? Of course, your front side is cold while the backside may be overheating, so you turn around fairly often.

Less I be misunderstood, as much as one might enjoy this event, a wood-burning fireplace is almost never an efficient way to heat one's entire house. I can almost see some of you wanting to argue with me right now, but we will save that for another time. Remember that the wood you are burning is stored energy from the sun, which made rain, warm soil and green leaves possible.

As mentioned before, examples of all three types of heat transfer may be present at the same location. In the fireplace, the fire heats the

air [convection], the stone absorbs the radiant rays [radiation], and anything that touches the stone or hot coals gets burned [conduction]. Well, I could write many pages about conduction, convection and radiation and I would enjoy doing so.

Our goal is to help us all better understand how heat transfer relates to energy efficiency and energy usage, which relates to comfort and utility bills, which is what we most care about anyway, right? Probably so, but you must admit that it is neat to be able to better understand anything relating to energy efficiency.

As I have enjoyed writing these three columns, I have thought of so many examples that I want to share with you. That is exactly what we plan to do in the future columns, but you know, one should not be surprised at so many possibilities since all energy comes from only one really big object, the sun, which I am now watching set in the western sky. See you next month.

DOUG RYE is a licensed architect and the popular host of the "Home Remedies" radio show. You can contact Doug at 501-653-7931. Source: Arkansas Electric Cooperatives Corporation.

Outages for May 2012

Occasionally, a part or parts of the delivery system fail and an outage occurs. Below are the larger outages for May.

Date	Area	Members Affected	Duration	Cause
5/21	Howard area	75	1 hr 10 min	Reset line OCR
5/30	North A-phase circuit of Grenola sub	65	1 hr 20 min	Reset A-phase handle in sub
5/31	Southwest of Howard	50	2 hrs	Lightning
5/31	All of Longton substation	379	2 hrs	Westar off
5/31	Chautauqua area	70	3 hrs 45 min	Lightning
5/31	North half of Elgin	50	6 hr 30 min	Lightning

Caney Valley's Operating Statistics

For Month Ending	April 2012	April 2011
Meters Billed	5,555	5,551
kWh Sold	4,377,744	4,654,574
Total Revenue	\$ 650,375	\$ 631,184
Purchased Power	\$ 410,413	\$ 364,965
Operating Expenses	\$ 188,652	\$ 194,327
Depreciation Expenses	\$ 49,227	\$ 48,473
Interest Expenses	\$ 20,115	\$ 30,066
Other Expenses	\$ 100	\$ 50
Operating Margins	\$ (18,132)	\$ (6,697)
Non-operating Margins	\$ 1,688	\$ 1,792
Total Margins	\$ (16,444)	\$ (4,905)
Margins Year-to-Date	\$ (59,329)	\$ 96,933