

THE CANEY VALLEY ELECTRIC COOPERATIVE ASSOCIATION, INC.

TheVoice

Caney Valley Electric Cooperative Assn., Inc.

Allen Zadorozny—General Manager

Board of Trustees

Patrick Steward
President

Kenneth Bates
Vice President

Carl Johnson Jr.
Secretary/Treasurer

Mack Chrisman
Trustee

Jim Clark
Trustee

Dale Clubine
Trustee

Dwane Kessinger
Trustee

Coral Ann Magnus
Trustee

Fred McAdam
Trustee

Contact Us

401 Lawrence, P.O. Box 308
Cedar Vale, KS 67024
Phone: 620-758-2262
Fax: 620-758-2926
cve@caneyvalley.com.

Office Hours

Monday - Friday, 8 a.m. to 4:30 p.m.

Power Cost Adjustment

The Power Cost Adjustment (PCA) for January is \$.02328/kilowatt-hour. This calculates to an additional \$23.28 per 1,000 kWh used.

The PCA was implemented in 2002 to cover only the increase in power costs charged to us by our wholesale power supplier, Kansas Electric Power Cooperative (KEPCo) in Topeka. The PCA varies each month depending on the wholesale charges from KEPCo, and is a flow-through on your electric bills based on the factor for the month.

FROM THE MANAGER

Outlook for 2011

The year of 2011 is already upon us! Your cooperative is looking forward to continue providing dependable electric service with the advantages and convenience of local access to our Cedar Vale headquarters. Our goal is to furnish conscientious, responsive, and personal service to our members.

When you call us, you will contact a real person who is an employee or an after-hours answering service person. You will not have to wait through an automated answering system. If your time allows, we would welcome you to visit us in person any time you can.

The 2011 work plans and line operations include ongoing line upgrades and improvements set out in the 2010-2013 construction work plan. Routine line maintenance and right-of-way clearing activities will also be a major part of the work in order to control outages and line losses.

Safety awareness for both our employees and the general public will be emphasized throughout the year.

General administrative activities will be monitored for efficiency and effectiveness. Several aspects of the electric utility billing and collecting procedures are always being reviewed. This may result in some changes in how they are conducted.

Encompassing all of the 2011 expectations for the cooperative is the willingness and receptiveness of the cooperative staff to be accessible to you for any comments, needs, questions, or problems that you might have. Feel free to contact us to discuss any of your concerns.

We wish you a very successful and happy 2011!

Allen A. Zadorozny, Manager



Allen Zadorozny

We wish
you a very
successful
and happy
2011!

Notice to our Rural Members....

We continue to receive calls regarding amounts on the "Add" line below the Power Cost Adjustment (PCA) on your bills.

If you live in a county that charges sales tax, there will always be an amount on that line. Our billing program automatically figures the sales taxes on the PCA amount, and includes it on the

line below the PCA.

Also, if you have miscalculated your bill from the month before and owe an additional amount (or have overpaid and have a credit), it will be included on the "Add" line.

Feel free to contact us if you have questions about your bill.

Attention High School Juniors

Caney Valley will send TWO students on a FREE summer trip!

The Caney Valley Electric Cooperative is sponsoring two all-expense-paid trips to Steamboat Springs, Colorado, July 9-15, 2011.

While at camp, you will stay at the scenic Glen Eden Resort in the beautiful Rocky Mountains. You will join winners from other cooperatives in Kansas, Colorado, Oklahoma, and Wyoming. Contest winners will learn about electrification, cooperatives, energy issues, safety, and leadership.

The contest is open to all current high school juniors in Caney Valley's service area, whose residence is served by Caney Valley Electric.

If you are a high school junior and are interested in this trip, please complete the application form below and send by February 16 to:

- ▶ Caney Valley Electric Cooperative
- ▶ P.O. Box 308, Cedar Vale, KS 67024



From left, Cale Ellis, Sarah Tatum and Cathy Call attended the week-long 2010 Cooperative Leadership Camp in Steamboat Springs, CO.



Camp participants spent their trip building leadership and teamwork skills.

Cooperative Youth Leadership Camp Application

For an eligible high school junior to enter the competition, the cooperative office should receive this coupon by February 16, 2011.

Name of Applicant _____

Address _____ City/State _____ Zip _____

Birth Date _____ Grade _____ School _____

Name of Parents/Guardian _____ Parents' Phone # _____

I agree that all information supplied in this application is accurate and true. _____

(Signature of Applicant)

I hereby grant permission for _____ to enter the 2011 Cooperative Youth Leadership Camp competition sponsored by Caney Valley Electric Cooperative, Inc. _____

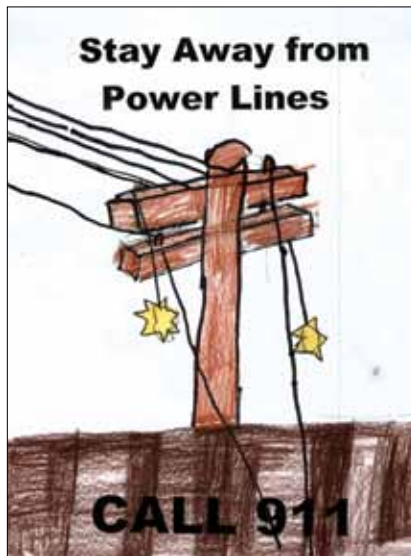
(Signature of Parent/Legal Guardian)

Local Fifth Graders Promote Electrical Safety

To commemorate National Cooperative Month, we once again invited area fifth graders to participate in an electrical safety poster contest.

We'd like to thank all the students who participated. There were a lot of excellent posters submitted, and the committee had a hard time deciding on a winner from some of the schools. Thanks again, kids!

Continued on page 16-D ▶



Cody Glass, Elk Valley Elementary



Nicholas Cannon, Elk Valley Elementary

Congratulations to all of our winners this year!



Riley Hall, Elk Valley Elementary



ATTENTION High School Seniors

Scholarship Deadline is March 31

Caney Valley Electric Cooperative has scholarships available for high school seniors going on to college or a vocational-technical school.

Application deadline for August enrollment is March 31, 2011.

Please contact Caney Valley Electric or your high school counselor for further information. Award recipients will be announced at our Annual Meeting on May 3, 2011.

Operating Statistics

For Month Ending	Oct 2010	Oct 2009
Meters Billed	5,531	5,513
kWh Sold	4,856,944	4,603,687
Total Revenue	\$ 681,544	\$ 643,990
Purchased Power	\$ 347,947	\$ 313,229
Operating Expenses	\$ 170,279	\$ 180,412
Depreciation Expenses	\$ 47,232	\$ 43,822
Interest Expenses	\$ 32,464	\$ 34,329
Other Expenses	\$ 350	\$ 0
Operating Margins	\$ 83,272	\$ 72,198
Non-operating Margins	\$ 1,949	\$ 2,066
Total Margins	\$ 85,221	\$ 74,264
Margins Year-to-Date	\$ 416,750	\$ 308,323

Telephone Numbers Needed

To help us serve you better, we need your up-to-date phone number on file at our office. There are several benefits to you, our member, if we have this information. We are able to contact you promptly:

- ▶ If there is an outage in your area and we need to make sure your service is restored when repairs are made, a phone call is necessary.
- ▶ If your neighbor reports an outage or a problem with their service, it is helpful if we can phone you to see if you are experiencing the same problem.
- ▶ If there is an outage in your area and our electric lines and equipment are not accessible to our crews because of a locked gate or barricade, the crews might have to leave your service off if we cannot reach you quickly by phone.
- ▶ When there is to be a scheduled outage in your area, we may try to notify you of this in advance by phone.
- ▶ If bookkeeping has a question about a payment that is received, it is very helpful to make a phone call and resolve the question quickly.
- ▶ If we serve you on an oil account, having the pumper's name and phone number would be very helpful.

We appreciate knowing our members and being able to contact them promptly so that we can provide the best electric service and record keeping possible. If you are aware that we do not have your phone number on file, please contact us at 758-2262 or 1-800-310-8911, or send a note with your billing payment to P.O. Box 308, Cedar Vale, KS 67024. Thank you very much!

Local Fifth Graders Promote Electrical Safety

Continued from page 16-C

Right: Brett Jones, Elk Valley Elementary.

Below: Maria Kimzey, Elk Valley Elementary



Outages for November 2010

Occasionally, a part or parts of the delivery system fail and an outage occurs. Below are the larger outages that occurred during November 2010.

Date	Area	Members Affected	Duration	Cause
11/11	Elgin	60	1 hr 40 min	Pole on fire